

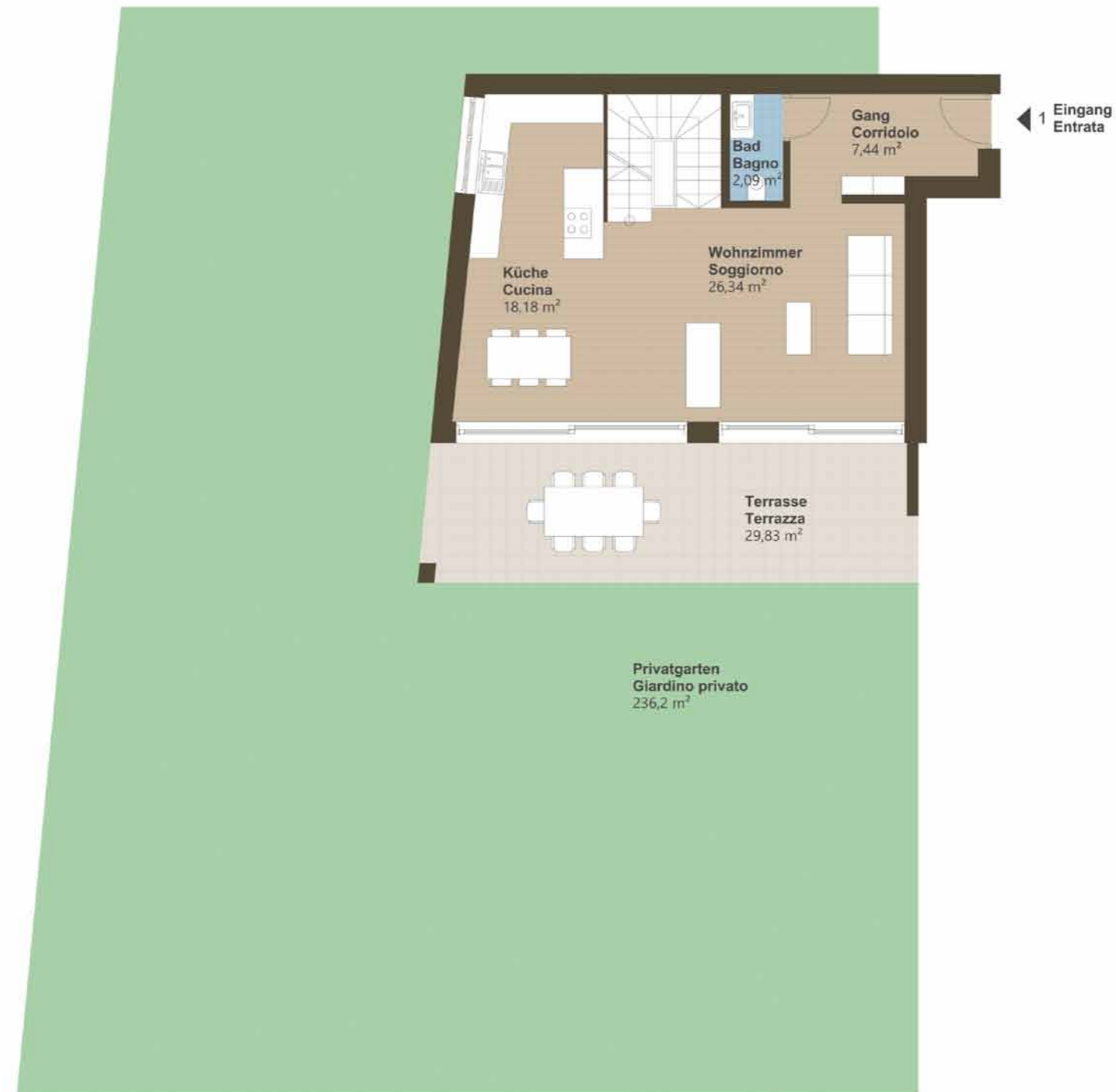


WOHNUNG 1- Haus  
APPARTAMENTO 1 - Casa

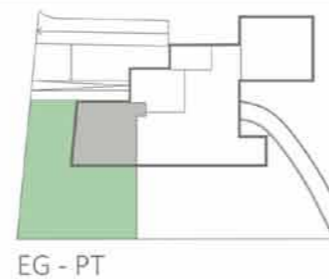
Nettowohnfläche Superficie abitabile	104,6 m <sup>2</sup>
Fläche mit Mauern Superficie con muri	141,3 m <sup>2</sup>
Terrasse überdacht Terrazza coperta	55,7 m <sup>2</sup>
Hobbyräume beheizt Spazi hobby riscaldati	94,3 m <sup>2</sup>
Garage Garage	123,5 m <sup>2</sup>
Privatgarten Giardino privato	236,2 m <sup>2</sup>
<b>Verkaufsfläche Superficie di vendita</b>	<b>239,5 m<sup>2</sup></b>

# VILLA MONICA

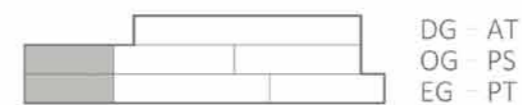
EXKLUSIV WOHNEN



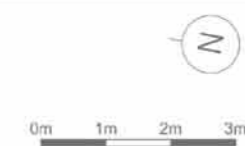
GRUNDRISS / PLANIMETRIA



SCHNITT / SEZIONE



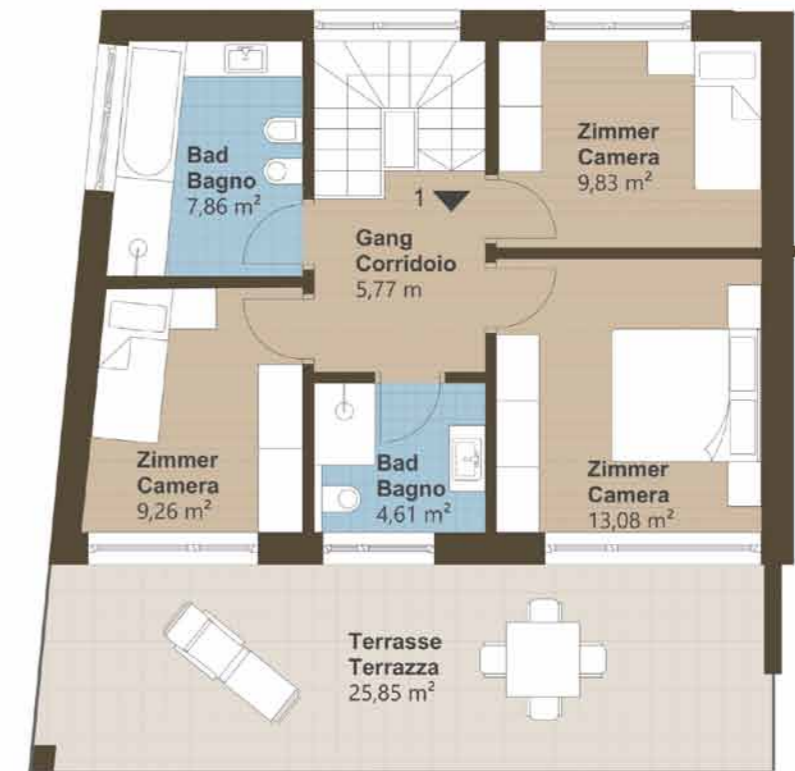
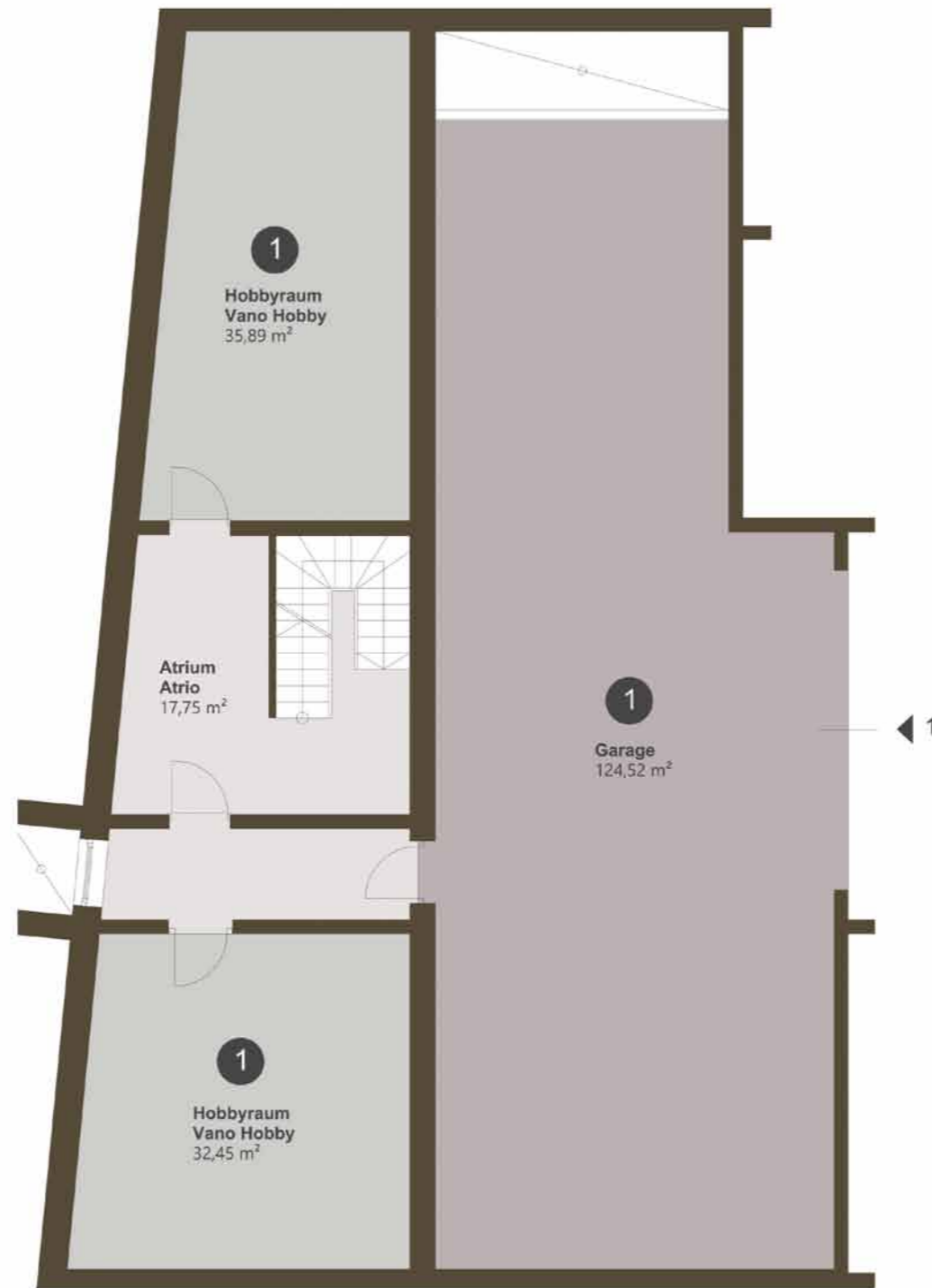
M=1:100 (A3)





# VILLA MONICA

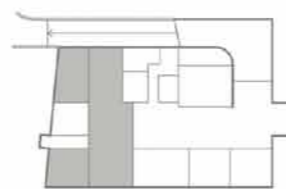
EXKLUSIV WOHNEN



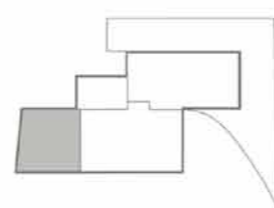
GRUNDRISS / PLANIMETRIA

SCHNITT / SEZIONE

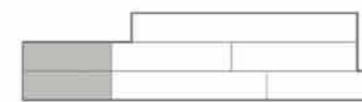
M=1:100 (A3)



UG - ST



OG - PS



DG - AT  
OG - PS  
EG - PT



0m 1m 2m 3m