



VILLA MONICA

EXKLUSIV WOHNEN

GARAGE - KELLER
GARAGE - CANTINA

Apartment 1 - Appartamento 1

Garage - Garage 124,5 m²
Hobbyräume beheizt 68,4 m²
Spazi hobby riscaldati

Apartment 2 - Appartamento 2

Garage - Garage 35,7 m²
Keller - Cantina 10,7 m²

Apartment 3 - Appartamento 3

Garage - Garage 35,7 m²
Keller - Cantina 10,7 m²

Apartment 4 - Appartamento 4

Garage - Garage 49,3 m²

Apartment 5 / Appartamento 5

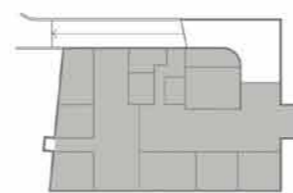
Garage - Garage 53,2 m²
Keller - Cantina 19,4 m²



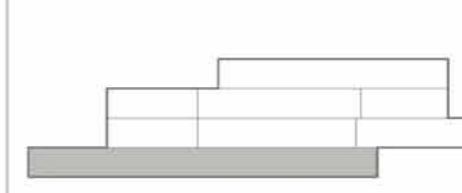
GRUNDRISS / PLANIMETRIA

SCHNITT / SEZIONE

M=1:100 (A3) M=1:150 (A3)



UG - ST



DG - AT
OG - PS
EG - PT
UG - ST



0m 1m 2m 3m